

ROTARY TOOL Plunger™

MILESCRAFT
Always the Better Idea.

Rockford, IL 61109 • Patent Pending • www.milescraft.com

PLUNGER

Model 1000

(Plunger can be used with the following corded rotary tools: Dremel models 275, 285, 395, 398, and the cordless model 8000-01; ToolShop; Mastercraft; Craftsman; Black & Decker RTX)

Safety Warning: Always wear eye protection and a dust mask when operating power tools. Inspect bit for damage before use. Always pull the rotary tool toward you.

Assembly Instructions:

Installing the Plunger to the rotary tool

- 1 Remove ring at the collet end of the rotary tool. This will expose the threads on the arbor end of the tool. NOTE: On some models of rotary tools it may be necessary to remove the collet nut to remove this ring.
- 2 Thread rotary tool into threaded center of the base.

Assembling edge guide and circle cutter

- 3 Identify edge guide parts from photo above.
 - Select two wing nuts, two washers, and two carriage bolts (part numbers on all)
 - Insert carriage bolts through metal edge guide, into plastic clamp assembly and secure with flat washers and wing nuts
 - Insert guide rods into plastic clamp assembly and tighten wing nuts
 - Insert guide rods into prepared plunger edge guide locking system and tighten machine screws with Philips screwdriver
 - Loosen wing nuts to adjust edge guide as needed
- 4 The Plunger is capable of cutting circles up to 12" in diameter. To use the circle cutting option:
 - Remove plastic clamp from edge guide
 - Insert nail into nail hole on plastic clamp

- Reattach plastic clamp to edge guide, with nail facing down, towards your board
 - Adjust rods to desired radius and secure finish nail at center of circle
- 5 Assemble locking system for edge guide
 - Select two square nuts (part #) and two (size) machine screws (part #) from parts package
 - Insert square nuts into slots on clear base of plunger.
 - Thread short machine screws into nuts. Turn with Philips screwdriver until snug.

Operating Instructions:

Installing the routing bit

- 6 Lock shaft of rotary tool with button while loosening collet nut. You may need to use a wrench to loosen the nut.
- 7 Insert router bit as far as possible to minimize run-out and give maximum grip on the bit shaft.
- 8 Re-lock shaft of rotary tool and tighten bit.

Use of rotary tool and plunger

- 9 To adjust depth of cut
 - Zero bit cut depth with base at top of travel
 - Adjust depth scale to desired depth of cut
 - Press down on handles (base locks automatically)
 - To return to zero depth of cut, press lock tab down (releases base)
- 10 Move rotary tool and base so bit is cutting into work piece in a clockwise motion. Do not cut in a counter clockwise motion as bit

may grab work and you may lose control of the tool.

Note: Move rotary tool and plunger base from left to right when routing edges.

- 11 Move rotary tool in a continuous motion to avoid burning of work piece.
- 12 Since end grain tends to chip out when shaping, rout end grains of boards before edges to reduce chipout and splintering.
- 13 When making deep cuts, it is recommended to make several light cuts rather than one heavy cut. This will improve control and give a better finish.

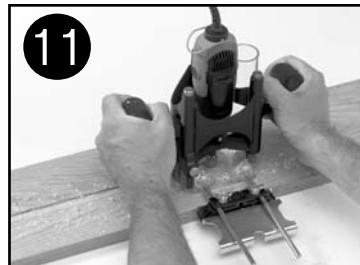
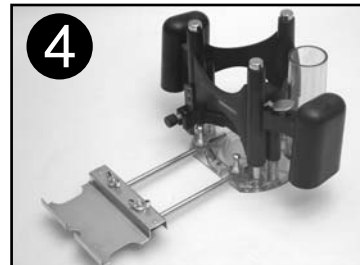
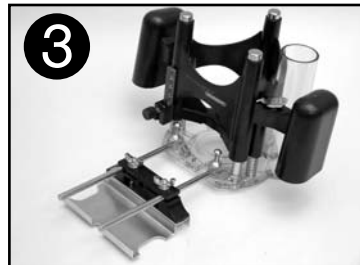
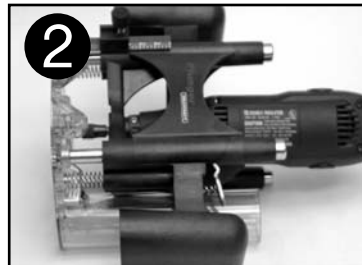
Use with the integrated vacuum system

- 14 The integrated vacuum system allows use of the Plunger and your corded rotary tool in an area where the work area must stay clean. By inserting your shop vac into the vacuum exhaust pipe, you will have the freedom to use the Plunger anywhere you wish without making a mess.

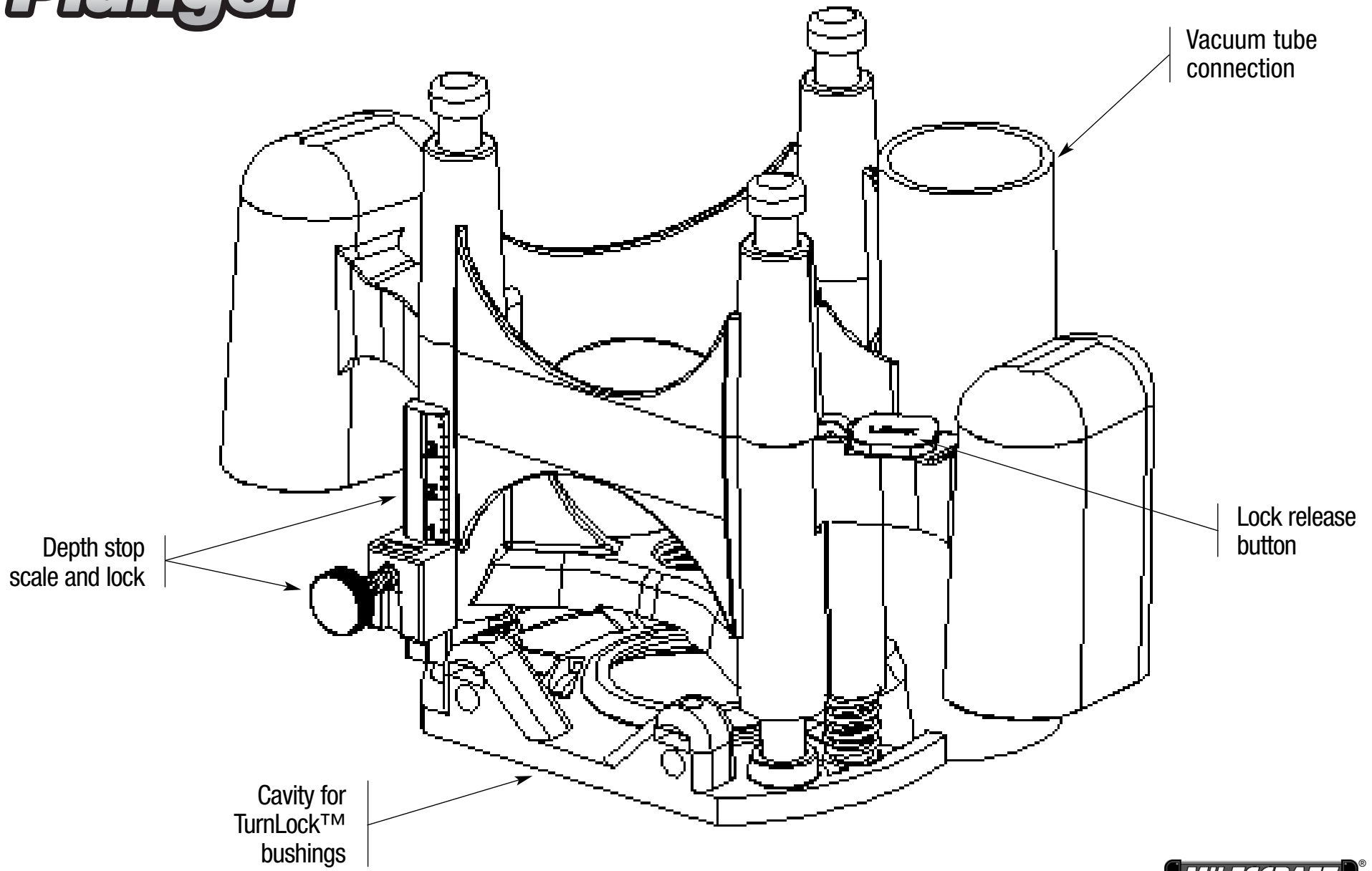
Use with the Milescraft Turnlock Bushing Set

- 15 Turnlock bushings simply twist into the Plunger base. Line up tabs on desired bushing with slots in base and turn clockwise into position. To remove turn counterclockwise until unlocked and lift out.
- 16 Turnlock bushings can be used with shop-made templates and unpiloted router bits for mortising locks and hinges and making multiple copies of patterns.

Assembly Instructions • Assembly Instructionsr • Assembly Instructions



ROTARY TOOL
Plunger[™]



MILESCRAFT[®]
Always the Better Idea.

Rockford, IL 61109 • Patent Pending
www.milescraft.com